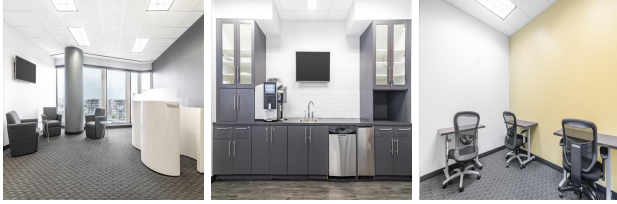


100 S. Ashley Drive, Suite 600, Tampa, Florida, USA

View this office online at:

<https://www.newofficeamerica.com/details/serviced-offices-100-s-ashley-drive-suite-600-tampa-florida>



Comprising of 22 storeys, this business centre boasts a prestigious address with high visibility to enhance your business. Offices reside on the 6th floor and boast spectacular views across the nearby Hillsborough Bay area which is brimming with natural beauty ideal for inspiring and relaxing your team. The centre is fully furnished and fitted with comfort cooling and hot desking solutions while allowing use of the kitchen facilities and executive meeting rooms, striking the perfect balance between a comfortable and practical working environment. With a manned reception, your guests will be welcomed into the bright and stylish lobby area while tenants will benefit from a wealth of dedicated support including telephone answering and administrative services.

Transport links

- Nearest road:
- Nearest airport:

Key features

- Access to multiple centres nation-wide
- Access to multiple centres world-wide
- Administrative support
- Air conditioned
- Carpets
- Cat 6 networking or higher
- Central heating
- Conference rooms
- Furnished workspaces
- High-speed internet
- Hot desking
- Kitchen facilities
- Lift
- Meeting rooms
- Modern interiors
- Reception staff
- Security system
- Telephone answering service

- Virtual office available
- WC (separate male & female)
- Wireless networking

Location

Nestled in the thriving heart of Tampa's central business district, this property is enveloped by corporations of all sizes including company headquarters from the finance, insurance, shipping and industry sectors. There is a good selection of hotels, restaurants and entertainment facilities nearby in addition to beautiful parks and the stunning Hillsborough River, all of which lie within easy walking distance. The area is well-served by bus routes and drivers can enjoy easy access to the Selmon Crosstown Expressway and the I-275 which provides direct connections to Tampa International Airport located just 12 minutes away.

Points of interest within 1000 metres

- USF Riverwalk Park (park) - 307m from business centre
- Tony Janus Park (park) - 307m from business centre
- Gaslight Square Park (park) - 308m from business centre
- Florida Museum of Photographic Arts (museum) - 310m from business centre
- Tampa Police Department Headquarters (police) - 356m from business centre
- Plant Park (park) - 493m from business centre
- St John's Episcopal Parish Day School (school) - 501m from business centre
- AIDS Memorial Park (park) - 502m from business centre
- Courthouse Square (park) - 527m from business centre
- South Regional Parking Garage (parking) - 539m from business centre
- MacDill Park (park) - 54m from business centre
- Hillsborough County Courthouse (courthouse) - 636m from business centre
- Curtis Hixon Park (park) - 646m from business centre
- Tampa Bay Times Forum (stadium) - 686m from business centre
- Sam M. Gibbons United States Federal Courthouse (courthouse) - 702m from business centre
- Courthouse Annex (public building) - 725m from business centre
- Hillsborough County School Board (public building) - 733m from business centre
- Edgecomb Courthouse (public building) - 773m from business centre
- Cotanchobee Fort Brooke Park (park) - 824m from business centre
- Herman Massey Park (park) - 841m from business centre
- Twiggs Street Parking Garage (parking) - 879m from business centre

- Tampa Bay History Center (museum) - 893m from business centre
- University of Tampa (university) - 944m from business centre
- Pepin Stadium (stadium) - 957m from business centre
- Thomas Parking Garage (parking) - 968m from business centre
- Sam Bailey Baseball Field (pitch) - 999m from business centre

All information contained in this document is for guide purposes only and NewOfficeAmerica.com.com cannot be held responsible for any inaccuracies or omissions. Please confirm all details with the agent representing this office space before proceeding. Full terms of service can be viewed at <http://www.NewOfficeAmerica.com.com/terms-of-service>.