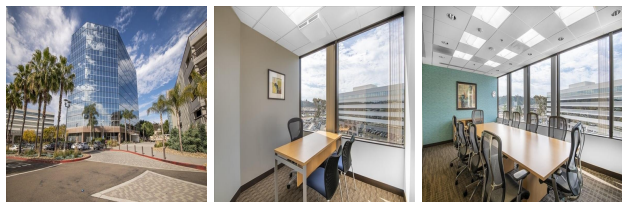


1455 Frazee Road, Suite 500, San Diego, California, USA

View this office online at:

<https://www.newofficeamerica.com/details/serviced-offices-1455-frazee-road-suite-500-san-diego-california>



With an impressive, glass-fronted exterior and the beautiful landscaped campus, this business centre creates a strong first impression for visitors, ideal for projecting a good corporate image for your business. This property is one of two twin towers and is currently home to companies from finance to medicine industries offers versatile workspace to suit a wider range of business types. Offices are fully furnished and well-equipped, boasting high speed internet, ergonomic furniture, comfort cooling and hot desking facilities, all of which enjoy plenty of natural light to enhance productivity. With modern kitchen amenities, conference rooms and a delightful lounge, this centre strikes the perfect balance between professional and comfortable accommodation to support your business.

Transport links

- Nearest road:
- Nearest airport:

Key features

- Access to multiple centres nation-wide
- Access to multiple centres world-wide
- Administrative support
- Board room
- Business park setting
- Carpets
- Cat 6 networking or higher
- Central heating
- Comfortable lounge
- Conference rooms
- Flexible contracts
- Furnished workspaces
- High-speed internet
- Hot desking
- IT support available
- Kitchen facilities
- Lift

- Meeting rooms
- Modern interiors
- Reception staff
- Recycling facilities
- Security system
- Telephone answering service
- Town centre location
- Virtual office available
- WC (separate male & female)
- Wireless networking

Location

Located in Mission Valley, this business centre provides a prestigious address for your business in San Diego which has plenty to offer developing businesses. Surrounded by beautiful palm tree-lined streets, this centre lies within easy walking distance to nearby shops, hotels, banks and restaurants, all of which are well-served by numerous bus routes offering effortless travel around the city. With the San Diego Trolley light rail system and Cabrillo Freeway close by, there is excellent connectivity for commuters while San Diego International Airport can be reached in just 12 minutes by car which is perfect for global businesses.

Points of interest within 1000 metres

- Mission Heights Park (park) - 729m from business centre

All information contained in this document is for guide purposes only and NewOfficeAmerica.com cannot be held responsible for any inaccuracies or omissions. Please confirm all details with the agent representing this office space before proceeding. Full terms of service can be viewed at <http://www.NewOfficeAmerica.com/terms-of-service>.