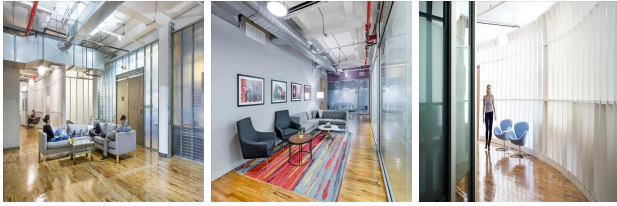


41 E 11th Street, New York, New York State, USA

View this office online at:

<https://www.newofficeamerica.com/details/serviced-offices-41-e-11th-street-new-york-state>



Flexibility is the key to these unique office spaces with incredibly high ceilings, skylights, ornate columns and wooden floors creating a terrific environment from which to work. In a great location at the center of Silicon Alley there is access to many public transport links, hotels, fine restaurants and the airport.

Transport links

- Nearest tube: Union Square
- Nearest railway station: New York - Pennsylvania Station
- Nearest road: Union Square
- Nearest airport: Union Square

Key features

- 24 hour access
- Access to multiple centres nation-wide
- Administrative support
- AV equipment
- Close to railway station
- Conference rooms
- Conference rooms
- High speed internet
- High-speed internet
- IT support available
- Meeting rooms
- Modern interiors
- Near to subway / underground station
- Reception staff
- Security system
- Telephone answering service
- Town centre location

Points of interest within 1000 metres

- Washington Square Park (park) - 492m from business centre
- Stuyvesant Square (park) - 724m from business centre
- Gramercy Park (park) - 780m from business centre
- Christopher Park (park) - 831m from business centre
- Sheridan Square (park) - 840m from business centre
- Flatiron Building (attraction) - 952m from business centre

All information contained in this document is for guide purposes only and NewOfficeAmerica.com.com cannot be held responsible for any inaccuracies or omissions. Please confirm all details with the agent representing this office space before proceeding. Full terms of service can be viewed at <http://www.NewOfficeAmerica.com.com/terms-of-service>.