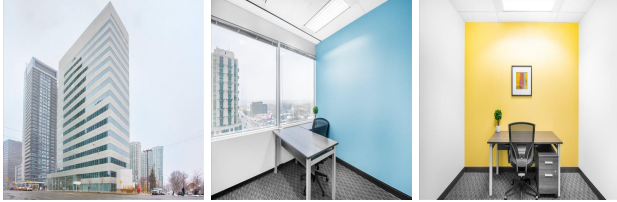


4711 Yonge Street, Suite 1000, Toronto, Ontario, Canada

View this office online at:

<https://www.newofficeamerica.com/details/serviced-offices-4711-yonge-street-suite-1000-toronto-ontario-canada>



A great opportunity to work from this stand out tower building, a Class A skyscraper in a prestigious Ontario location. The business center provides everything a modern business needs to succeed with stylish, modern offices, the latest state of the art technology and a team of professional, friendly support workers dedicated to helping each business to thrive. This incredible 16 story tower building has TTC subway access and is well placed in a thriving business district of Ontario close to healthcare, housing, finance, recruitment and accountants. A terrific, vibrant and productive setting for a business to thrive.

Transport links

- Nearest road:
- Nearest airport:

Key features

- Access to multiple centres nation-wide
- Access to multiple centres world-wide
- Administrative support
- Board room
- Car parking spaces
- CCTV monitoring
- Comfortable lounge
- Conference rooms
- Conference rooms
- Flexible contracts
- Furnished workspaces
- High-speed internet
- Hot desking
- IT support available
- Kitchen facilities
- Meeting rooms
- Modern interiors

- Near to subway / underground station
- Reception staff
- Telephone answering service
- Town centre location
- Virtual office available
- Voicemail
- WC (separate male & female)
- Wireless networking

Location

Accessibility is another fabulous advantage of this superb serviced business center - it is in a strategic location close to four of the major routes around the city giving fantastic accessibility in every direction. Tenants benefit from secure underground car parking spaces if required.

Points of interest within 1000 metres

- Sheppard-Yonge (railway station) - 159m from business centre
- Lansing United Church (place of worship) - 186m from business centre
- Sheppard-Yonge bus terminal (bus station) - 233m from business centre
- Sheppard Centre (mall) - 295m from business centre
- Elihu Pease House (museum) - 338m from business centre
- Sheppard (parking) - 345m from business centre
- Lansing Gospel Hall (place of worship) - 361m from business centre
- Cardinal Carter Academy for the Arts (school) - 438m from business centre
- Claude Watson School for the Arts (school) - 639m from business centre
- North York Tennis Club (pitch) - 692m from business centre
- Spring Garden Baptist Church (place of worship) - 694m from business centre
- Willowdale Park (park) - 696m from business centre
- Toronto Centre for the Arts (arts centre) - 760m from business centre
- Avondale Public School (school) - 798m from business centre
- Glendora Park (park) - 819m from business centre
- Yorkminster Citadel (Salvation Army) (place of worship) - 896m from business centre
- Princess Park (park) - 968m from business centre
- North York Centre (railway station) - 983m from business centre

confirm all details with the agent representing this office space before proceeding. Full terms of service can be viewed at <http://www.NewOfficeAmerica.com/terms-of-service>.