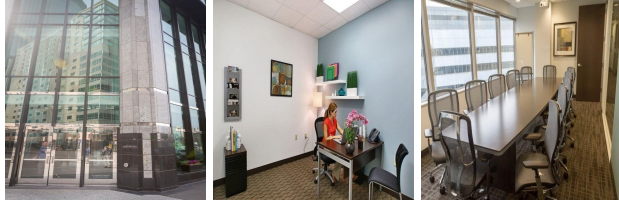


901 Marquette Avenue, Suite 1500, Minneapolis Business Center, Minneapolis

View this office online at:

<https://www.newofficeamerica.com/details/serviced-offices-901-marquette-avenue-suite-1500-minneapolis-business-cente>



Revel in an impressive Class A glass-fronted office tower which boasts a highly visible position and spectacular views across the skyline. Your guests will be welcomed in the magnificent lobby area by a friendly receptionist who also provides a range of secretarial and administrative services. Offices are available in a range of shapes and sizes, all of which are fully furnished, bright and brimming with contemporary style. Enjoy a peaceful atmosphere within the lounge areas that allow your team to relax and refresh while also taking advantage of the executive conference rooms to project a good corporate image for your company.

Transport links

- Nearest railway station: Target Field Station
- Nearest road:
- Nearest airport:

Key features

- Broadband Internet
- Comfortable lounge
- Conference room
- Disabled facilities (DDA/ASA compliant)
- Double glazing
- Flexible terms
- Furnished work spaces
- Manned reception
- Meeting rooms
- Modern interiors
- Telephone answering service
- Virtual office available
- WC (separate male & female)
- Wireless networking

Location

Comprising of 33 floors, this prestigious tower dominates the downtown Minneapolis skyline and enjoys close proximity to a plethora of well-established corporations. Credit Score companies, European Consultants and Advertising agencies all reside close by, offering excellent networking opportunities, in addition to a multitude of vibrant restaurants, hotels, bars and theatres. Located close to the historically significant Foshay Tower, these offices benefit from superb transport links including bus stops, tram lines, Target Field railway station and Interstate 394 while the international airport can be reached within a 15 minute drive.

Points of interest within 1000 metres

- Hilton Minneapolis (hotel) - 167m from business centre
- Hotel Ivy (hotel) - 292m from business centre
- Holiday Inn Express Downtown Minneapolis Convention Center (hotel) - 336m from business centre
- Marriott (hotel) - 403m from business centre
- Hennepin County Government Center (public building) - 497m from business centre
- Loews Minneapolis Hotel (hotel) - 571m from business centre
- Minneapolis City Hall (townhall) - 647m from business centre
- Target Center (stadium) - 667m from business centre
- Minneapolis Armory (parking) - 710m from business centre
- HCMC Parking Ramp (parking) - 771m from business centre
- 5th Street Ramp B (parking) - 820m from business centre
- 4th Street Ramp C (parking) - 977m from business centre

All information contained in this document is for guide purposes only and NewOfficeAmerica.com.com cannot be held responsible for any inaccuracies or omissions. Please confirm all details with the agent representing this office space before proceeding. Full terms of service can be viewed at <http://www.NewOfficeAmerica.com.com/terms-of-service>.